



# ACH

child and family services

protecting children.  
preserving families. since 1915.



Foster Care ♦ Adoption ♦ Family Transitional Housing ♦ Supervised Independent living ♦ Crisis Respite ♦ Group Care ♦ Trafficking Outreach  
Behavior Care ♦ Youth and Family Counseling ♦ Skill Builders ♦ Street Outreach ♦ Safe Place ♦ Employment Preparation ♦ Emergency Youth Shelter

# Who **we** are.

99 Year History

16 Programs In 20 Counties

CPA With Experience In Urban And Rural Areas

Council On Accreditation (COA) Accredited Since 2002

CHILDREN ♦ FAMILIES ♦ STEWARDSHIP ♦ SPIRITUALITY  
EVALUATION ♦ ACCOUNTABILITY ♦ LEADERSHIP



**TEXAS**

Department of Family and Protective Services

## Foster Care Redesign

- Single Source Continuum Contractor(SSCC)
- Performance Based Contract
- Greater flexibility and local decision-making
- DFPS retains case management



**ACH** child and  
family services  
protecting children. preserving families. since 1915.

817.335.HOPE (4673) [www.ACHservices.org](http://www.ACHservices.org)



**TEXAS**

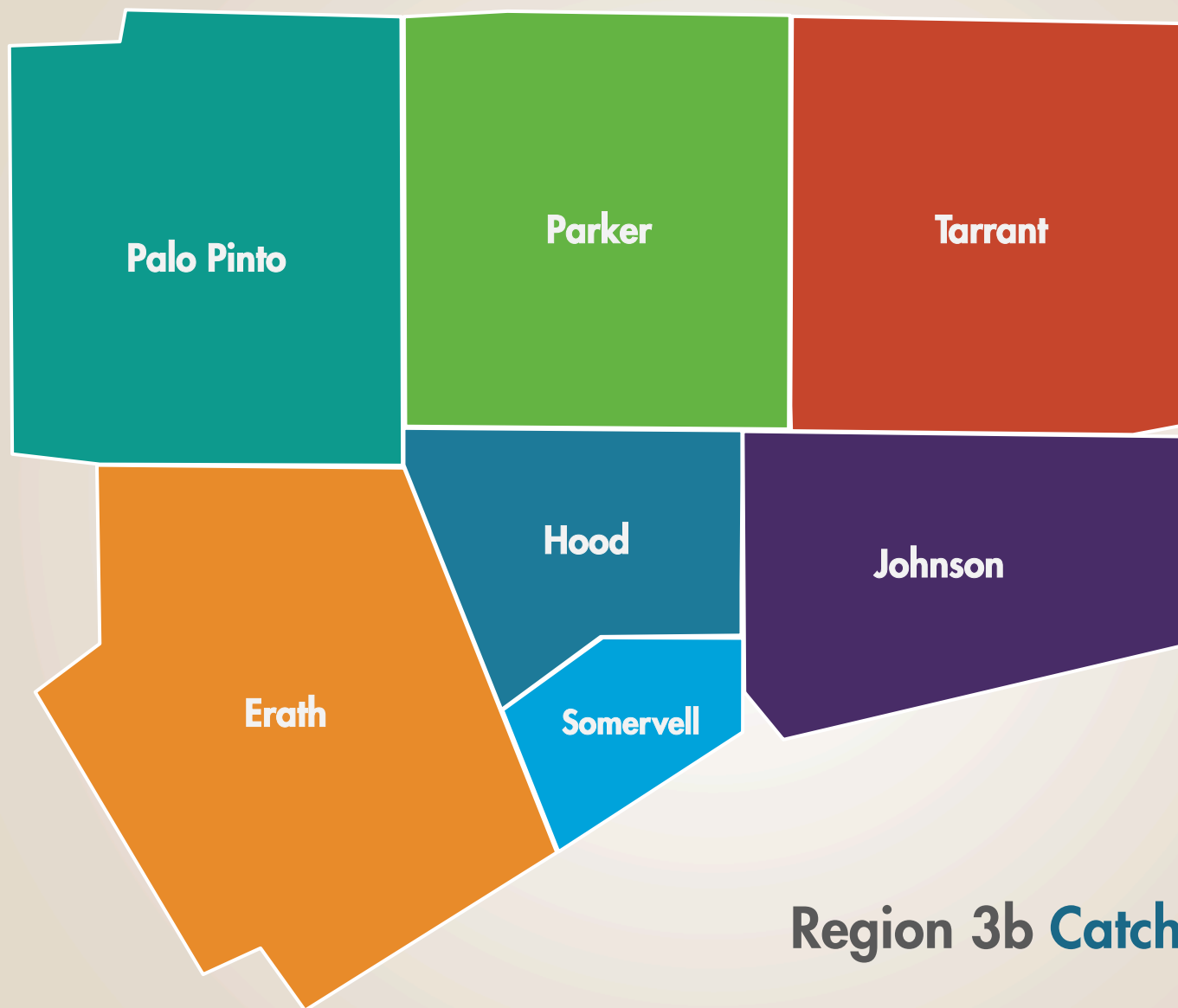
Department of Family and Protective Services

- SSCC takes custody within 4 hours
- Placement within 50 miles of home
- No more than 2 moves per placement
- Siblings placed together



**ACH** child and family services  
protecting children. preserving families. since 1915.

817.335.HOPE (4673) [www.ACHservices.org](http://www.ACHservices.org)



## Region 3b Catchment Area.

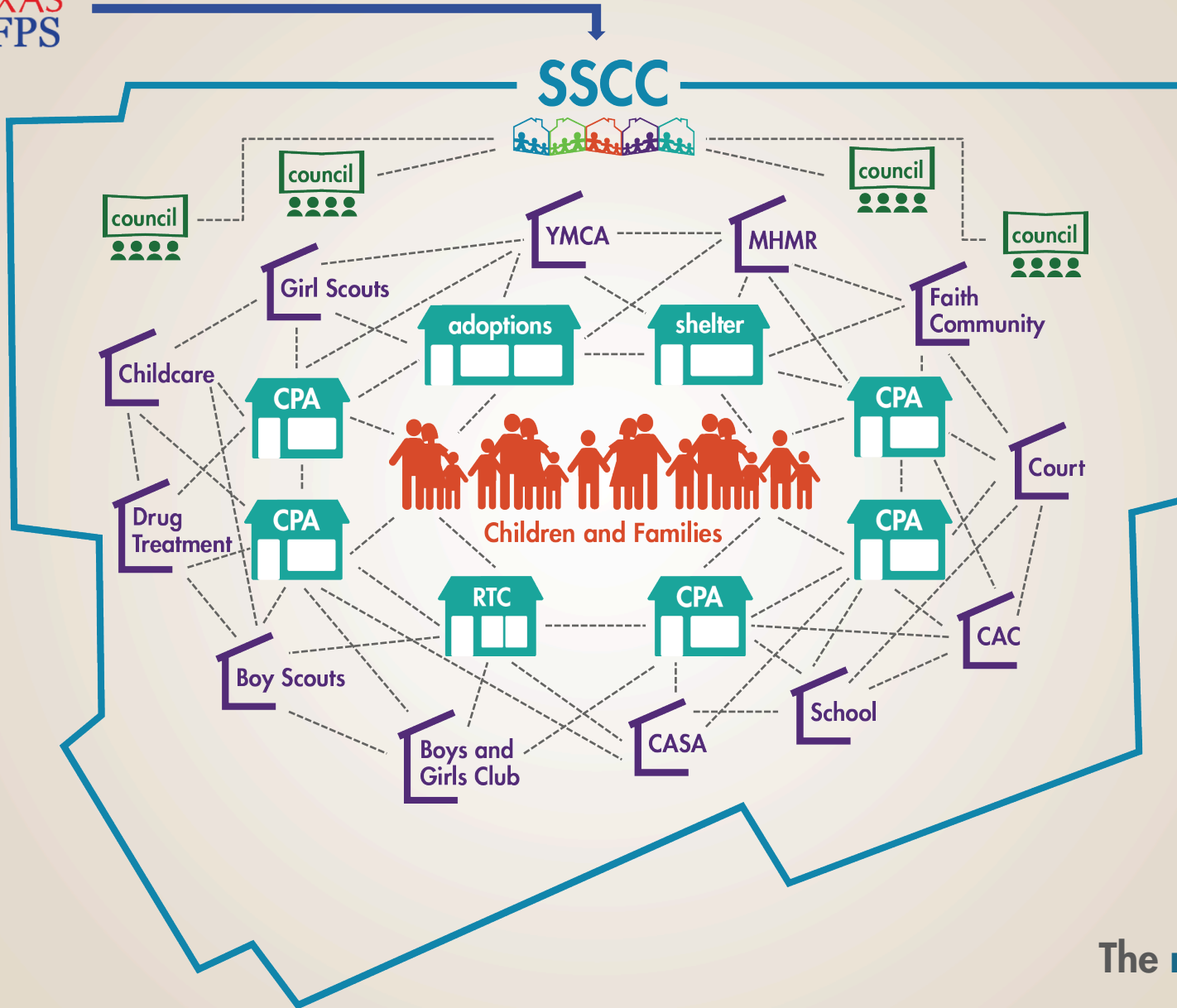


our community. our kids.

---

a division of ACH Child and Family Services

Our approach.



The network.





# our community. our kids.

a division of ACH Child and Family Services

- Strong Network Of Providers
- Engaged Partnership With DFPS
- Focus On Contract Outcomes
- Data Driven Decisions And Accountability
- Strong Financial Management
- Adaptability
- Community Engagement
- Robust Information Technology Systems



First and foremost,  
**children are safe**  
in the placements

Children are placed in their  
**home**  
**communities**

Children are appropriately  
served in the least restrictive  
environment that supports  
**minimal moves**

**connections**  
to family and others important to the  
child are maintained

Children are placed  
**with siblings**

To be fully prepared  
for successful adulthood, children and  
youth are  
**provided opportunities**  
experiences and activities similar to  
those of their  
non-foster care peers

Services respect the child's  
**culture**

Children and youth are  
provided opportunities to  
**participate in decisions**  
that impact their lives



**Community  
Engagement**

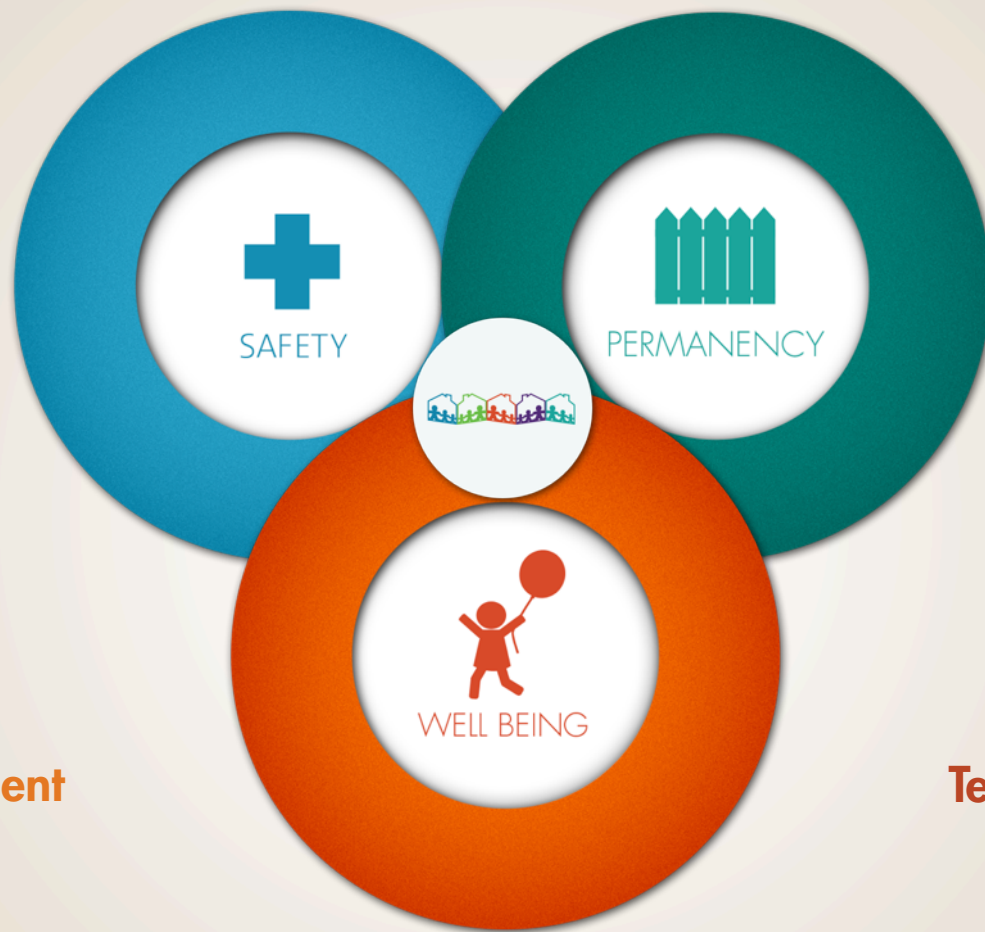
**Capacity  
Building**

**Risk  
Management**

**Care  
Management  
(UM)**

**Quality  
Management**

**Technology**



**Our model.**

# Improvement Strategies

- Quality Parenting Initiative
- Placement Matching
- Trauma Informed Care
- Praesidium
- Recruitment Strategy
- Communication



Stakeholder  
Planning Councils

# Community Engagement.

Local Leadership  
Advisory Panel

National Expert  
Advisory Panel



The **network**: capacity building

# Contract Timelines

## START DATE

- January 1, 2014

## Community Engagement Meetings

- January 1, 2014 - Ongoing

## JOINT POLICY MANUAL CPS

- Start: Feb 3, 2014
- Complete: April 18, 2014

## NETWORK COMMITTEES START

- February, 2014

## DFPS FCR Kickoff

- February 28, 2014

## PROVIDER CONTRACTS

- April, 2014

## LEGACY TRANSFER

- Begins July 1, 2014

## NEW REFERRALS

- Begin September 1, 2014



Q&A.



[www.ourcommunity-ourkids.org](http://www.ourcommunity-ourkids.org)